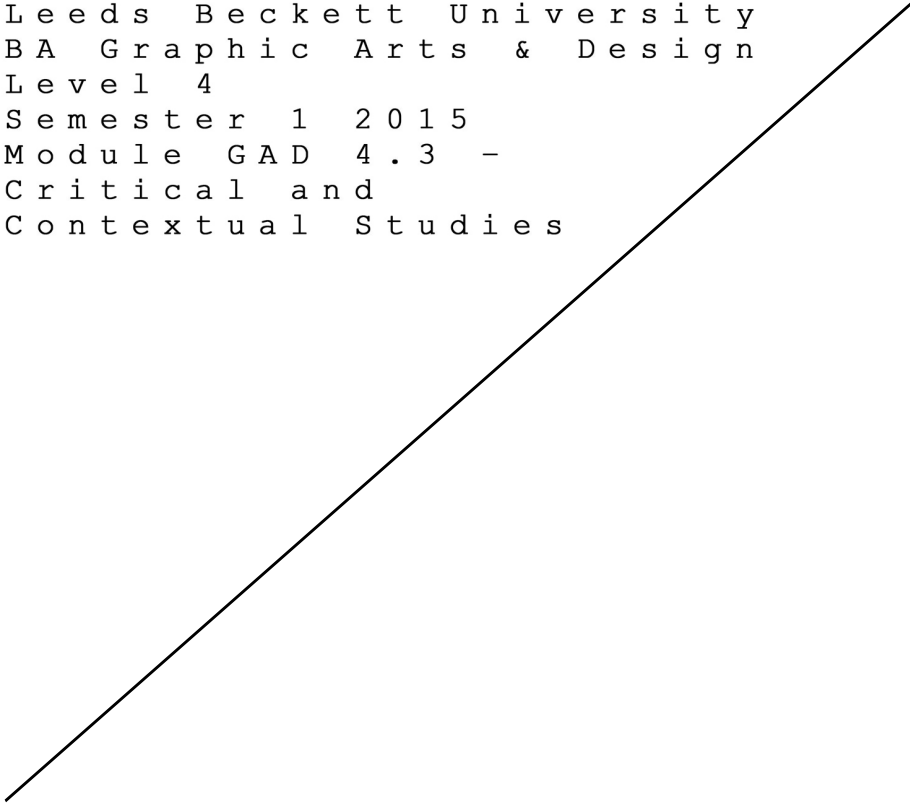
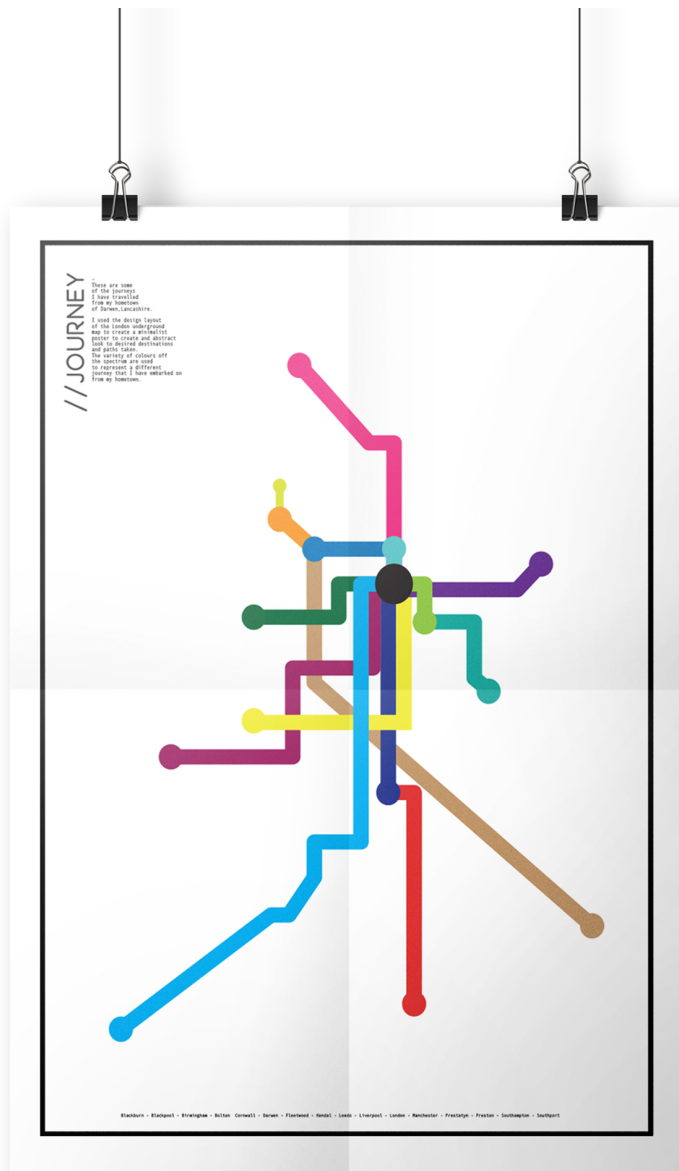


Leeds Beckett University
BA Graphic Arts & Design
Level 4
Semester 1 2015
Module GAD 4.3 -
Critical and
Contextual Studies

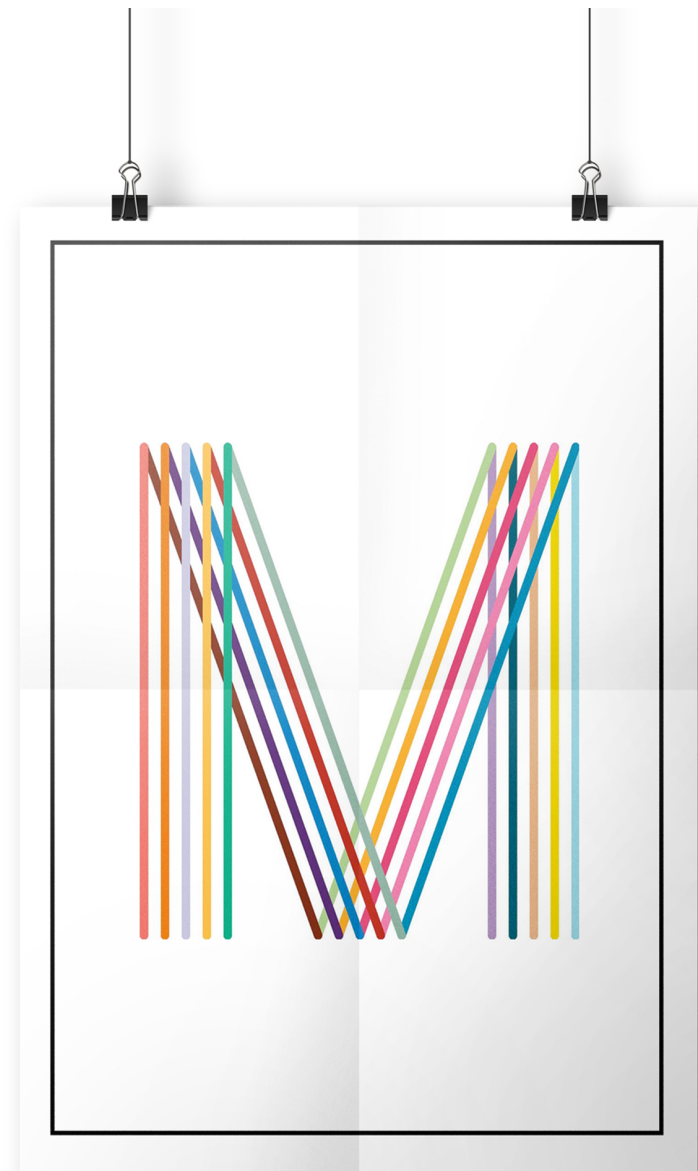


THINK
&
LINK
VISUAL
ESSAY

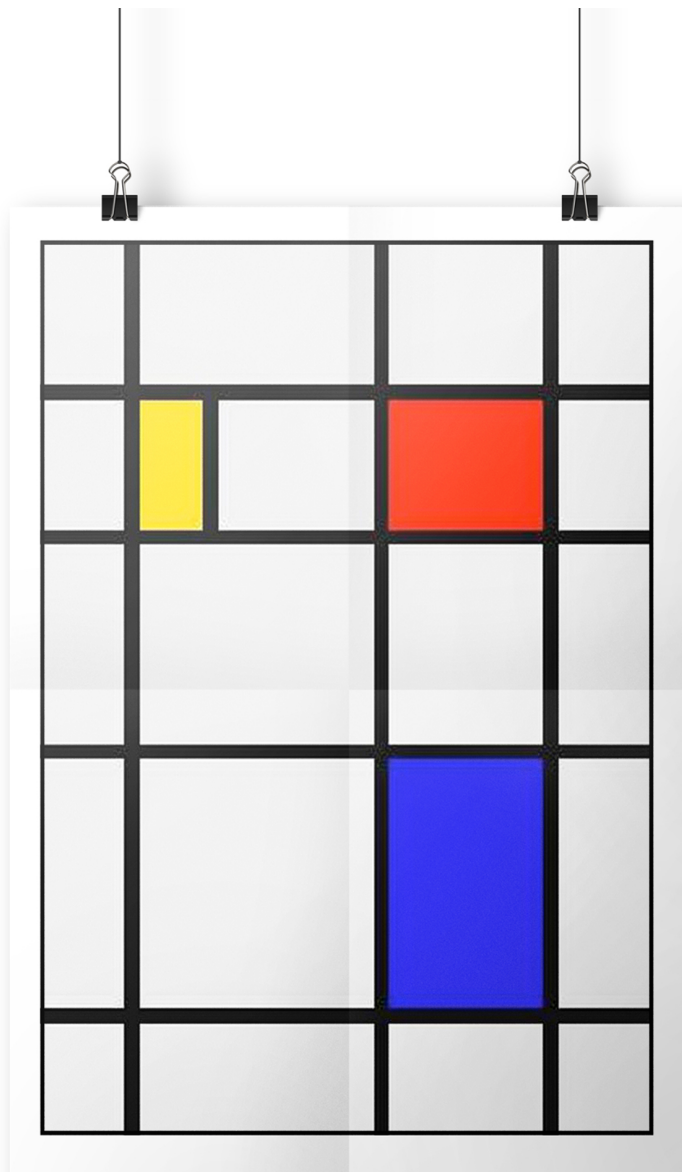
LEWIS TAYLOR



'JOURNEY' is a minimalistic poster based upon the journey's I have taken so far. Using the simplistic style based on the London Underground map.



Created by Peter Saville, is a vectorised fluent logo of the letter M designed for Manchester. Both of these images are in the same network as each other because of the thick coloured lines highlighting different elements.



This abstract block image was Created by Piet Mondrian an artist who was a founder of the De Stijl movement started in 1917. The image links to the previous poster due to them both having thin single vertical lines on a plain background.



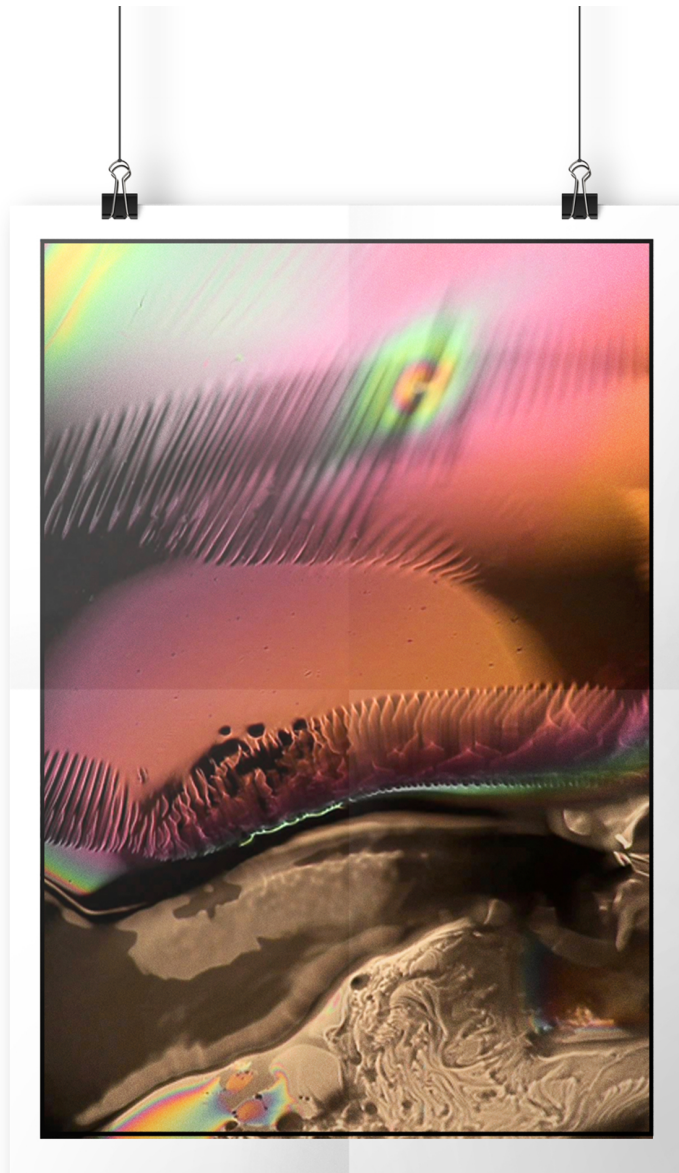
Montreal Olympics 1976, this image displays the indistinguishable olympic rings fading into a almost gradient effect. These images share the same colour palets and this is why they link.



This angled illusion image was photographed by Alexander Rodchenko in 1919, The Shukhov Transmission Tower links to previous poster as they both have circles in them.



Following the almost geometric design of the photo to the left, the 2015 gradiented cover for Years and Years mirrors the effect of the dynamic lines running across both these images.



Taking this still image from The XX's music video, shows a abstract gradiented texture. The image looks like it's been created using a various range of effects, but the bond between the previous image and this one is the similar colours.

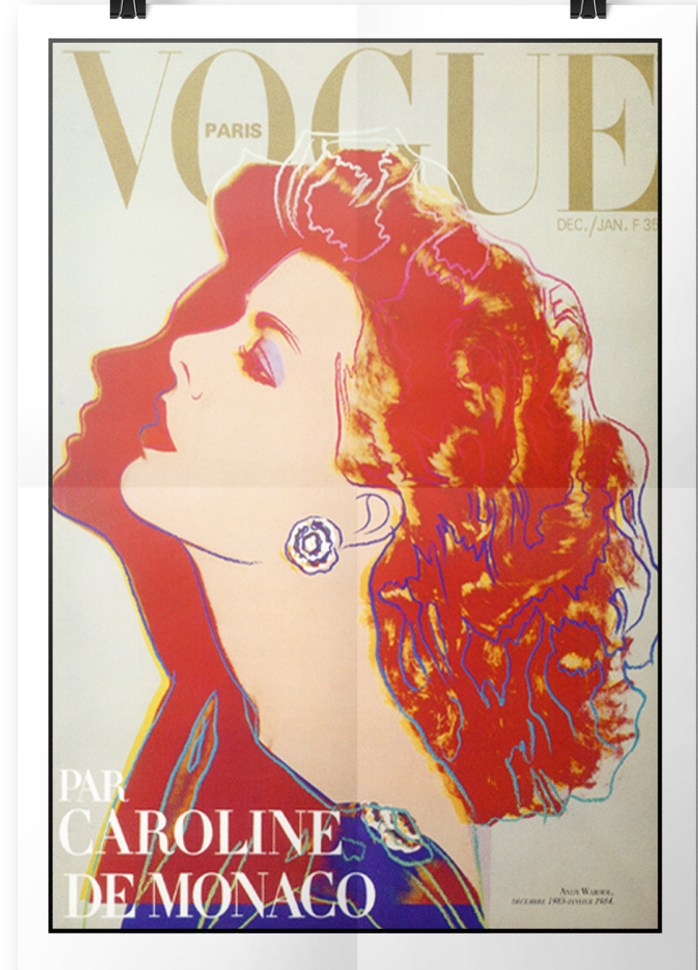


Straight away you can see the abstract elements and clever 'shadow' design of the three figures in the image.

Looking at this image, and the one on the left, you can see the warped petrol texture bonding them together.



Silvia Grav is a young photographer who experiments editing her photos in photoshop creating these beautiful but often disturbing images, The warp effect from the girls mouth links with the image of the warped shadows creating this link from graphics to photography.



Both Andy Warhal and Salvador Dali collaberaed on this piece and edited the image, giving it a cartoon sketch look. Both models have are facing to the left in both and whilst one girl is in pain the other posing.



This image taken by Nick Knight, of smoking girl with a watercolour background. The flow of the smoke coming off the woman's cigarette replicates the flow of her hair.



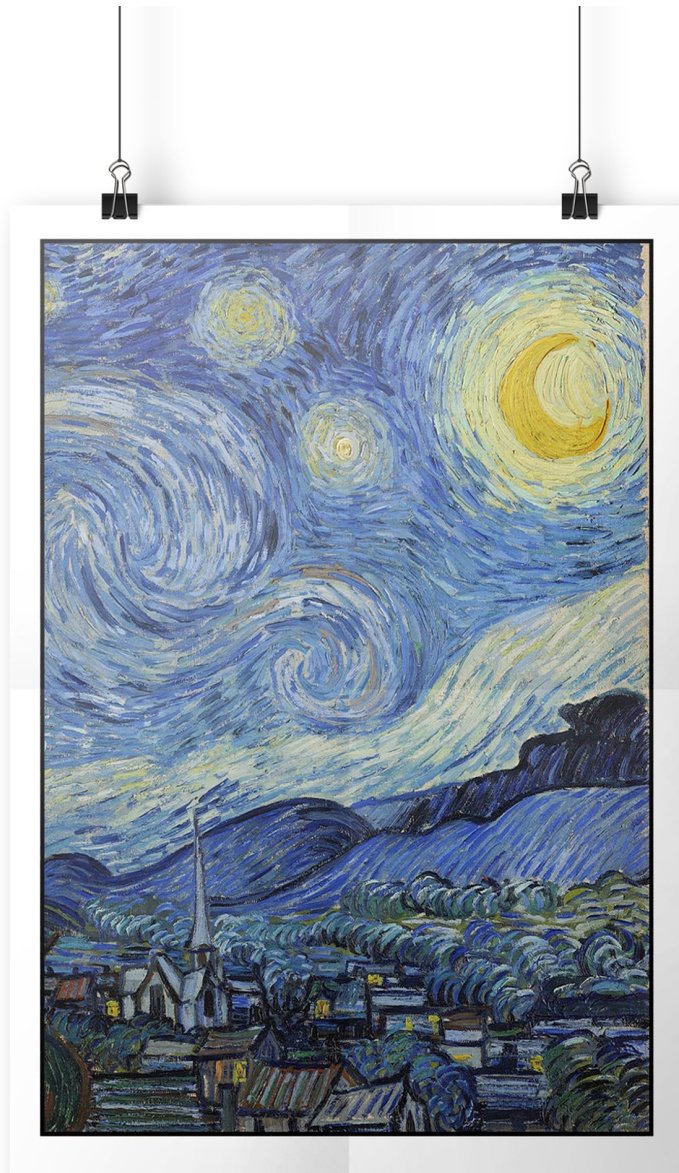
Painted by J M W Turner, in 1844 'Rain, Steam, and Great Bridge' is an iconic piece of British history. This scene looks similar to the image on the left, due to the background colour palette and the clouds replicating her smoke.



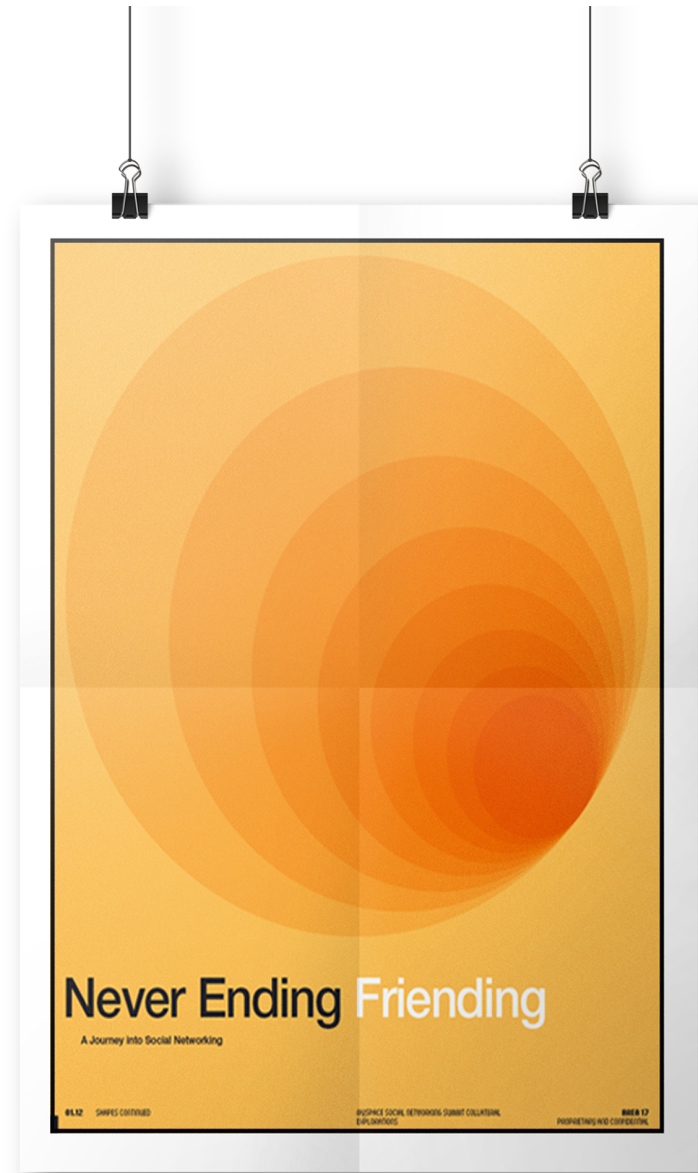
This self portrait painted by Lucien Freud, uses block colours and layers to create depth. The nude palette links this to the Turner painting.



Jolanda Van Meringen creates photographic collages, using layers similar to how Lucien Freud builds up his paintings. Both of these images link because of the use of his brush strokes.



The Starry Night painted in 1889 by Vincent Van Gogh, famous for his Post-Impressionism style. The link between this and Meringer collages are the coloured brushstrokes.



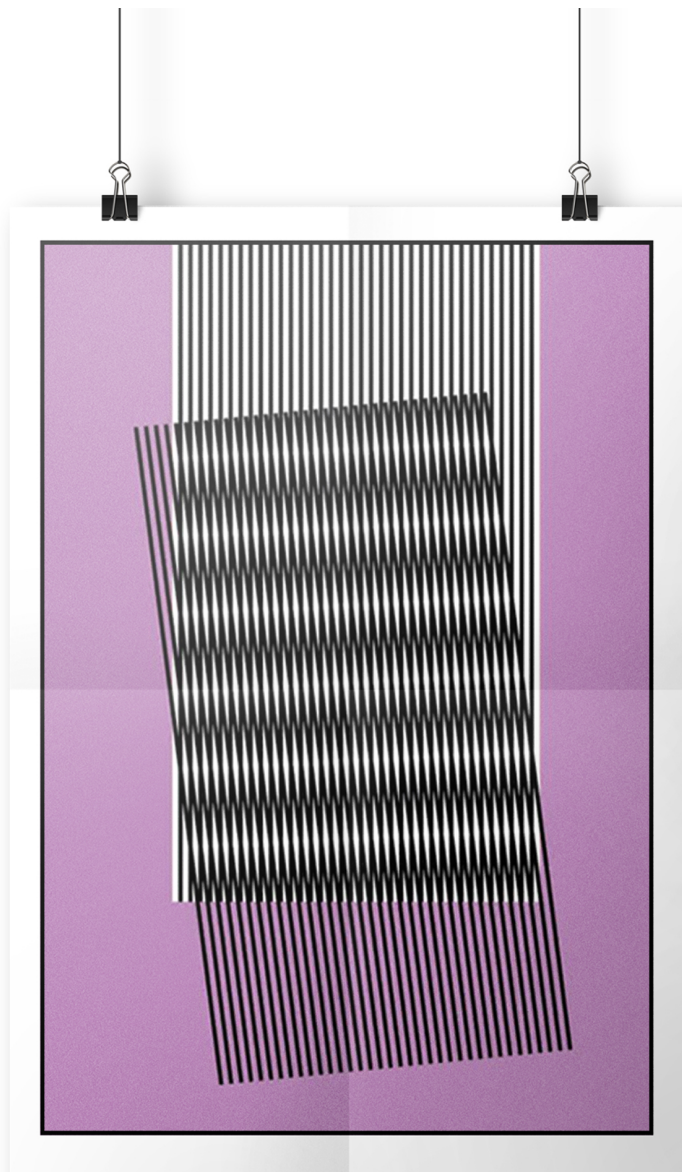
'Never Ending Friending' is a minimal shape poster. Representing a tunnel to the dangers of social media and getting trapped in the never ending cycle. The reason to why this links to Van Goghs' piece is the simple reason that the tunnel looks like the sun.



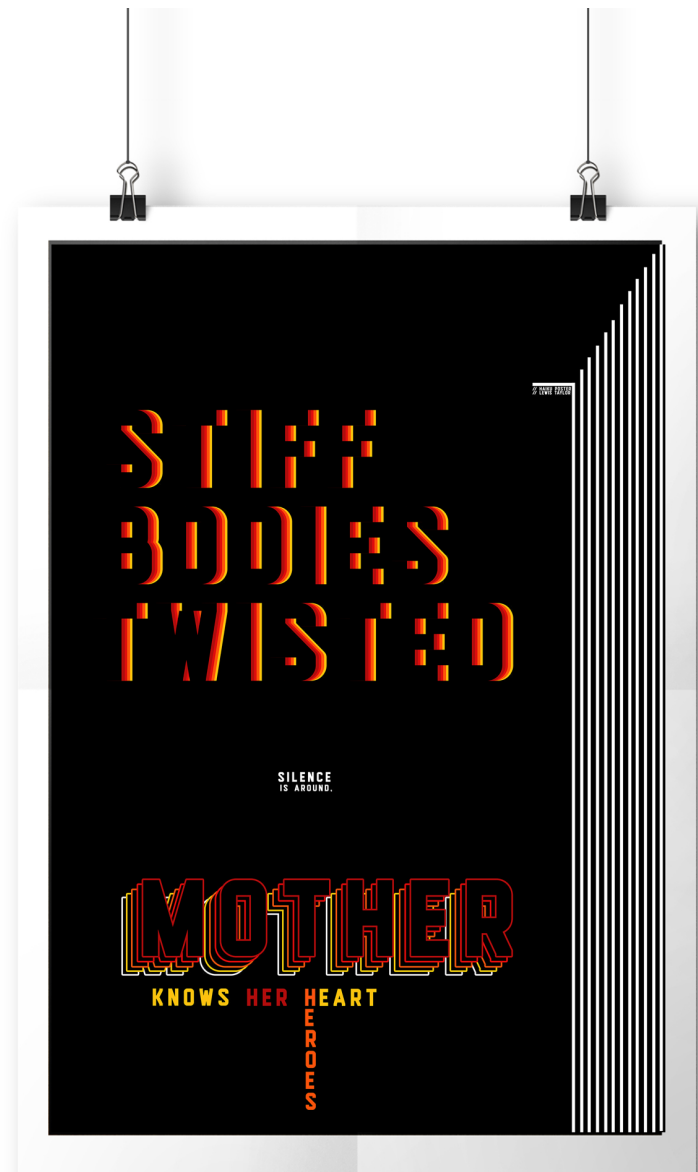
Laszlo Moholy-Nagy created this simple image from shapes in 1976 during his contribution to the Bauhaus movement.



This Russian Constructivist poster designed by the Stenberg Brothers during the second world war, the overlaid style of this image and the shapes that are involved in creating this image link with the image to the left.



This cover design for a Hot Chip's album 'Why Make Sense' is an abstract piece of artwork that links to the Stenberg Brothers poster, due to the block layout and the angled lines on the ringside.



This haiku poster was created in a post Russian Constructivist style as represented by the block colours. This ties in nicely with the Hot Chip album cover as they look similar with the vertical lines.